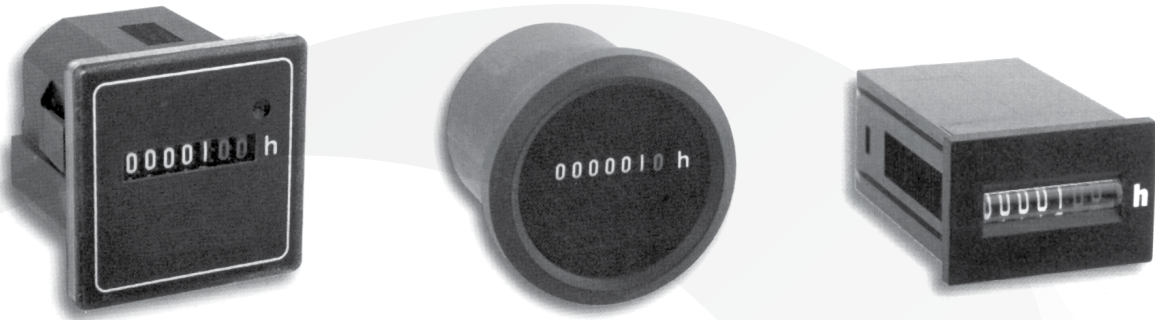


AC and DC Hour Meters

AC Models: HMA 460, HMA 470, HMA 300 **DC Models:** HMD 460, HMD 470, HMD 300



	AC Models DC Models	HMA 460 HMD 460	HMA 470 HMD 470	HMA 300 HMD 300
AC	Voltages	24, 120, 240, 400VAC	24, 120, 240, 400VAC	24, 120, 240VAC
	Frequency	50Hz, 60Hz	50Hz, 60Hz	50Hz, 60Hz
	Counting Range	99,999.99 hours	99,999.99 hours	99,999.99 hours
	Number of Digits	5 integers, 2 decimals	5 integers, 2 decimals	5 integers, 2 decimals
	Operating Temperature	-12° to 176°F (-25° to 80°C)	-12° to 176°F (-25° to 80°C)	-12° to 158°F (-25° to 70°C)
	Power Consumption	8mA	8mA	8mA
DC	Voltages	6-30VDC, 10-80VDC	6-30VDC, 10-80VDC	6-12VDC, 12-36VDC, 36-80VDC
	Counting Range	999,999.9 hours	999,999.9 hours	999,999.9 hours
	Number of Digits	6 integers, 1 decimal	6 integers, 1 decimal	6 integers, 1 decimal
	Operating Temperature	-2° to 158°F (-20° to 70°C)	-2° to 158°F (-20° to 70°C)	12° to 131°F (-10° to 55°C)
	Power Consumption	9mA	9mA	9mA
AC and DC	Protection	IP 40 front side IP 20 terminals	IP 65 front side IP 00 terminals	IP 40 front side IP 00 terminals
	Front Dimensions	1.89"x1.89" (48x48mm)	Ø2.28" (Ø58mm) Ø2.83" (Ø72mm)	1.42"x0.95" (36x24mm)
	Front Bezels	2.05"x2.05", 2.17"x2.17", 2.83"x2.83" (52x52, 55x55, 72x72, Ø80mm)	Ø2.87" & 3.14" (Ø72 & Ø80mm)	1.89"x0.95", 2.13"x1.14", 1.89"x1.89" (48x24, 54x29, 48x48mm)
	Special Protection	IP 65 front side IP 20 terminals	IP 67 front side IP 00 terminals	IP 65 front side (transp. housing) IP 00 terminals
	Approval	CE mark, UL recognized	CE mark, UL recognized	CE mark, UL recognized
	Connection	1/4" spade, screw clamp	1/4" spade, screw clamp	1/4" spade, screw clamp
	Mounting Options	Flush with retainer bracket or metal clamp DIN rail	Flush with metal clamp or 3 screw front Ø2.83" and Ø3.14" (Ø72 and 80mm)	Flush with retainer clamp Cutout 1/3"x0.84" (33x22mm) or 3 screw front Ø2.83" (Ø72mm)

